

+PANTHER

Robust Rechargeable Searchlight

Description:

- 1500 | 350 lumens
 - 1000 metre beam
 - 2 light modes: High and low
 - Operates for 1.5 hours on high and 4h on low
 - Battery charging indicator (red to green)
-
- **Supplied with:** Mains charger and shoulder strap
 - **Used by:** MoD, Police, Search & Rescue and Railways
 - **Applications:** Mountain Search & Rescue, Highway Maintenance, Long range Covert Operation (With Infra-red Filter), Track inspection, Security

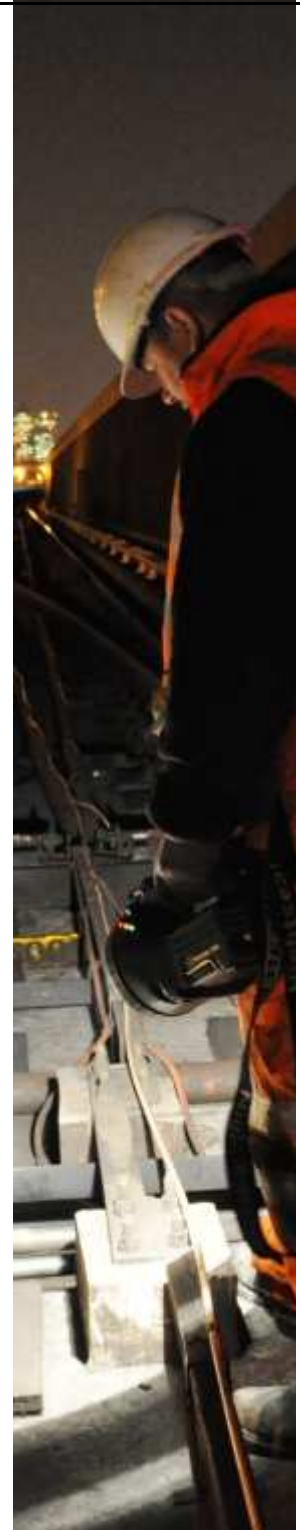


The PANTHER is a powerful, robust and rechargeable searchlight, with both long distance spotlight and local area floodlight beams.

Used for professional applications by the emergency services, utility companies, security organisations and both military and civilian rescue teams. It is virtually unbreakable, incorporating a toughened lens and a shock resistant polyethylene plastic casing. Water resistant, it can be used in all weather conditions.

Optional Extras:

- Vehicle charger
- Red, amber, green and blue filters
- Infra-red filter
- Vehicle charging base
- Vehicle/Wall mounting bracket
- 30W, 75W and 100W halogen bulbs
- Protective carry case
- IP65 version available
- LED version available



Specification

Specification:

Light output	1500 / 350 lumens
Light source	50W / 20W halogen
Run time	1h30 / 4h
Battery	12V 7A/h dry lead acid
Charge time	8h
Product Size (mm)	L260 x W150 x H180
Product Weight (kg)	3
Boxed Size (mm)	L269 x W224 x H204
Boxed Weight (g)	3.5
Part No	NSPANTHER







